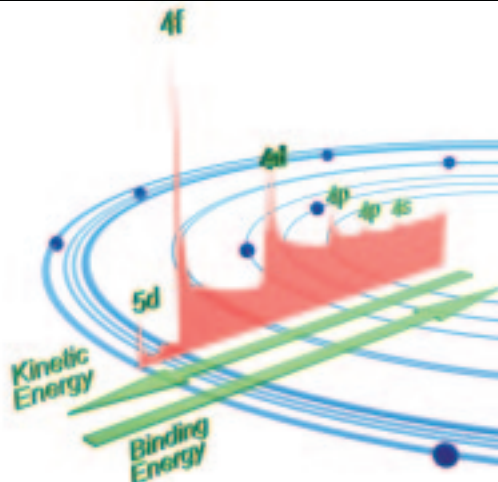


MultiLab 2000

MultiLab 2000 is the versatile multi-technique surface analysis instrument from Thermo Electron.

MultiLab 2000 has been designed for routine XPS applications and is an ideal choice for surface analysis in any laboratory. MultiLab 2000 can be configured into a powerful multi-technique instrument by choosing from a wide range of options and accessories. This can be done either at the initial purchase stage or subsequently through retrofit upgrades.

- High transmission electron energy analyser
- Twin crystal X-ray monochromator
- High flux dual anode X-ray source
- AES/SEM/SEM electron gun
- High flux UV source
- Depth profiling and ISS ion gun
- Low energy charge neutralization source
- Broad spot sample cleaning source



High Performance and Versatility

Electron Analyser

A true 180° compact, high performance, electron energy analyser for XPS, SAXPS, ARXPS, AES, UPS and ISS applications.

- Excellent energy resolution
- Precise small area XPS
- Angle-resolved XPS
- UPS, AES and ISS

Microfocused X-ray Monochromator

Twin crystal monochromator with small spot electron gun for maximum sensitivity from selected areas.

- Excellent resolution in XPS
- Source-defined SAXPS
- Moveable anode for longer life

Twin Anode X-ray Source

400 W high emission, low maintenance source

- Al and Mg anodes
- Eliminate stray peaks
 - *Very low crosstalk <0.35%*
 - *Silver substrate*

UV Source

Small spot source with integral tilt mechanism

- High photon flux
- He I and He II modes
- 2-stage differential pumping

Auger Electron Gun

SEM gun with high spatial resolution AES and SAM capability

- 3 µm spot size
- Pulse counting and differential Auger
- Static and scanning Auger

Charge Compensation

Electron gun for charge neutralization

Differentially Pumped Ion Gun

High performance gun for precision depth profiling

- Uniform depth profiles
- ISS
- Energy range: 100 eV - 5 keV

Sample Cleaning Ion Gun

Cross ionisation gun for broad area cleaning and uniform etch profiles

- Broad static beam
- Energy range: 300 eV - 3 keV
- Compact design

Sample Preparation

Fast entry air lock with multiple port options.

- Ion gun
- Gas cell
- Gas dosing
- Sample heating and cooling post

Data System

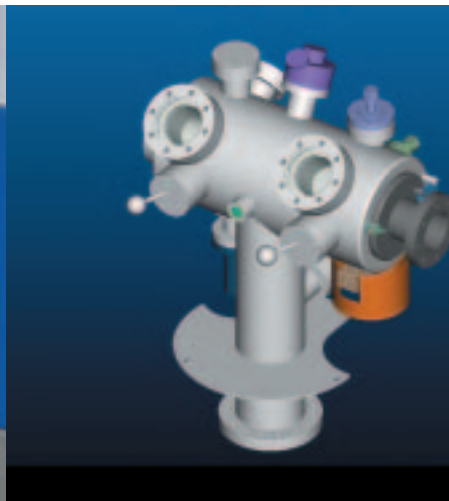
Data acquisition and processing system.

- Windows™ based
- User friendly
- Digital control of components

Full technical descriptions of MultiLab 2000 and analytical options are available in the following documents, these can be obtained from your local Thermo Electron office (see back page):

AN31066 - MultiLab 2000
AN30054 - Electron Analyser
AN30058 - UV Source
AN30005 - Data System
AN30060 - Auger Electron Gun

AN30056 - Microfocus Monochromator
AN30061 - Differentially Pumped Ion Gun
AN30057 - Twin Anode X-ray Source
AN30062 - Sample Cleaning Ion Gun



MultiLab 2000

MultiLab 2000

Electron Analyser

- Double focusing spherical sector analyser
- Electrostatic input lens for large area, small area and angle resolved spectroscopy
- Multi-channel spectroscopic detector

Specimen Manipulator

- High precision 4-axis specimen manipulator
- Five specimen holders

Specimen Viewing

- X-ray shielded viewports
- Zoom microscope with monochrome CCD TV video camera for specimen alignment
- High-power fibre optic light source

Fast Entry and PREPLOC Chamber

- Ports for ion gun, gas cell, gas dosing, and sample heating and cooling post
- UHV-compatible specimen transfer mechanism
- Manual gate valve to analysis chamber
- Turbomolecular pump

Data System

- Digital instrument control
- Data acquisition and processing

Options

Twin Anode XPS Source

- MgK α /AlK α X-ray source with linear motion drive
- Water cooled

Microfocused Monochromator

- 0.5 metre Rowland circle monochromator
- Electron gun and multi-position anode
- Twin quartz toroidal crystals
- Electron flood gun for charge compensation

UV Photoelectron Source (UPS)

- Two stage differential pumping
- Helium gas admission system

Auger Electron Gun

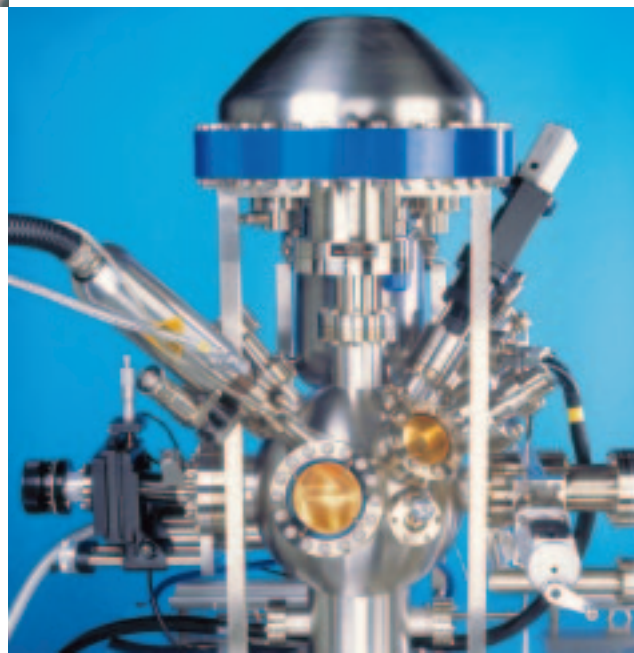
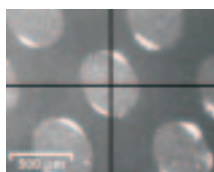
- Electron gun power supply
- Scintillator/photomultiplier detector

Sample Cleaning Ion Gun

- Broad spot ion source
- Gas inlet leak valve and manifold

Depth Profiling and ISS Ion Gun

- High precision gas inlet leak valve
- Absorbed current imaging for ion beam alignment



Thermo Electron Corporation maintains a network of offices throughout the world. For detailed technical information please contact +44 1342 327211

Australia

+61 2 9898 1244 • analyze.au@thermo.com

Austria

+43 1 333 50340 • analyze.at@thermo.com

Belgium

+32 2 482 30 30 • analyze.be@thermo.com

Canada

China

+86 10 5850 3588 • analyze.cn@thermo.com

France

+33 1 60 92 48 00 • analyze.fr@thermo.com

Germany

+49 6103 4080 • analyze.de@thermo.com

Italy

+39 02 950 591 • analyze.it@thermo.com

Japan

+81 45 453 9100 • analyze.jp@thermo.com

Netherlands

+31 76 587 98 88 • analyze.nl@thermo.com

Nordic

+46 8 556 468 00 • analyze.se@thermo.com

South Africa

+27 11 570 1840 • analyze.sa@thermo.com

Spain

+34 91 657 4930 • analyze.es@thermo.com

Switzerland

+41 61 48784 00 • analyze.ch@thermo.com

UK

+44 1442 233555 • analyze.uk@thermo.com

USA

+1 800 532 4752 • analyze.us@thermo.com

www.thermo.com



Thermo Electron, Surface Analysis Instruments,
East Grinstead, UK is ISO certified

©2004 Thermo Electron Corporation. All rights reserved.
Windows™ is a registered trademark of Microsoft Corporation. All other trademarks are the property of Thermo Electron Corporation and its subsidiaries.

Specifications, terms and pricing are subject to change. Not all products are available in all countries. Please consult your local sales representative for details.

BR31005_E 04/04C